

**Paper Reference(s) 4PH1/2P**  
**Pearson Edexcel International GCSE (9–1)**

**Physics**  
**Paper: 2P**

**Time: 1 hour 15 minutes plus your additional time allowance**

**Diagram Booklet**

**In the boxes below, write your name, centre number and candidate number.**

<b>Surname</b>					
<b>Other names</b>					
<b>Centre Number</b>					
<b>Candidate Number</b>					

**INSTRUCTIONS**

There may be spare copies of some diagrams in case you need them.

**THIS DIAGRAM BOOKLET MUST BE RETURNED WITH THE QUESTION PAPER AT THE END OF THE EXAMINATION.**

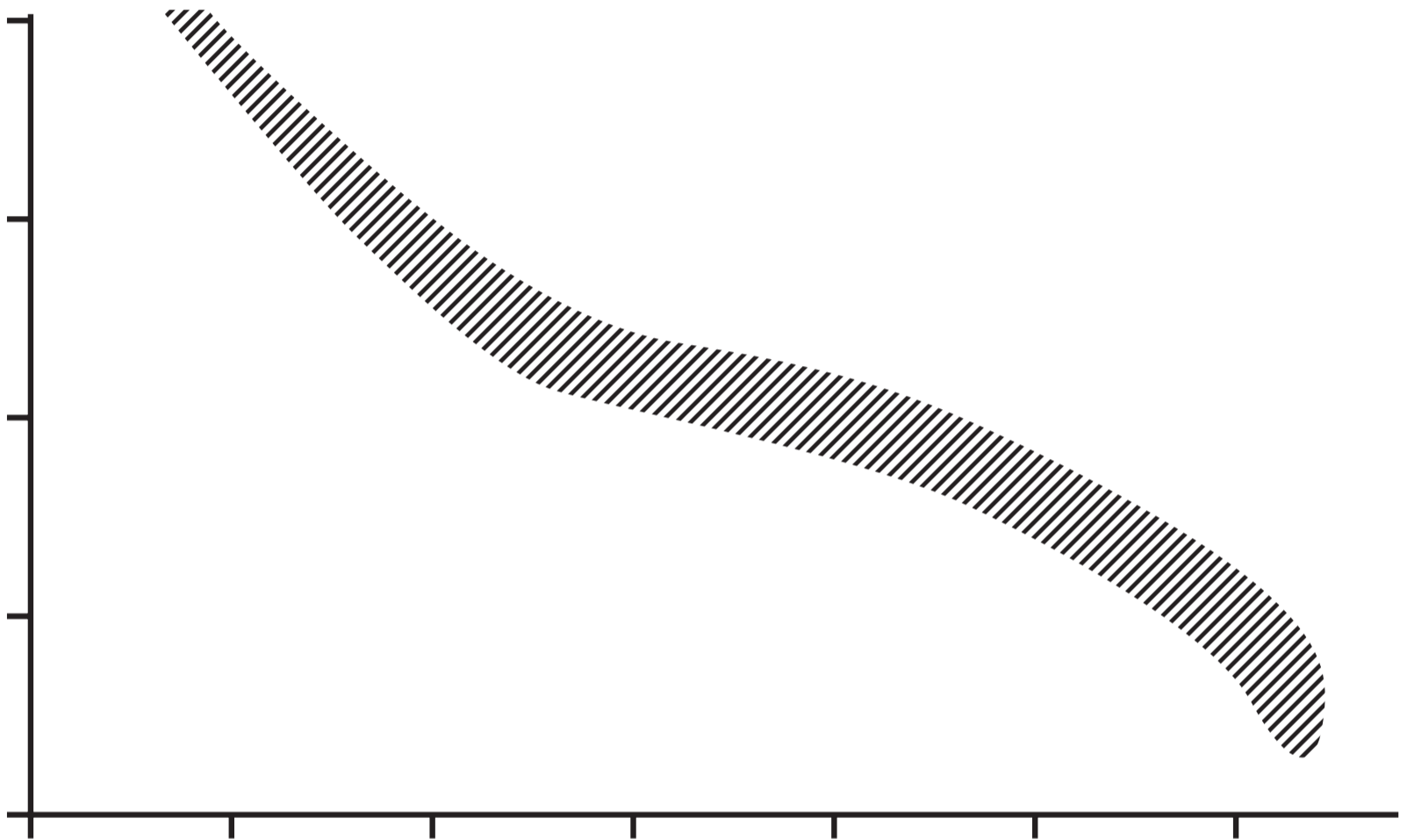
## Contents

### Page

4	Question 1(a)
5	Question 1(a) (Spare copy)
6	Question 2
7	Question 2(b)
8	Question 3
9	Question 4(a)(ii)
10	Question 4(b)(i)
11	Question 4(b)(i) (Spare copy)
12	Question 4(b)(ii)
13	Question 5
14	Question 5(b)
15	Question 6(b)
16	Question 7

## Question 1(a)

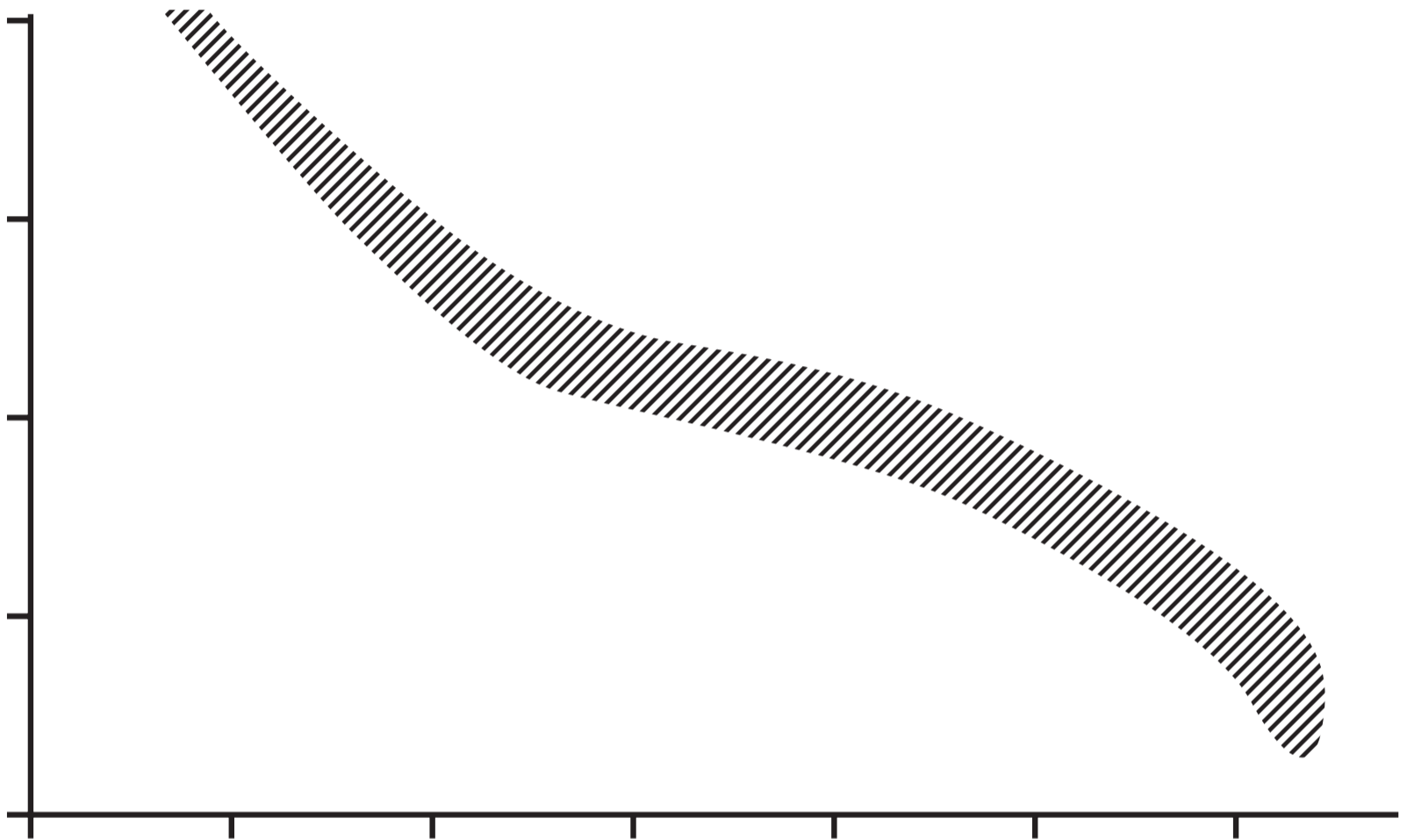
**Absolute  
magnitude**



**Temperature**

## Question 1(a) (Spare copy)

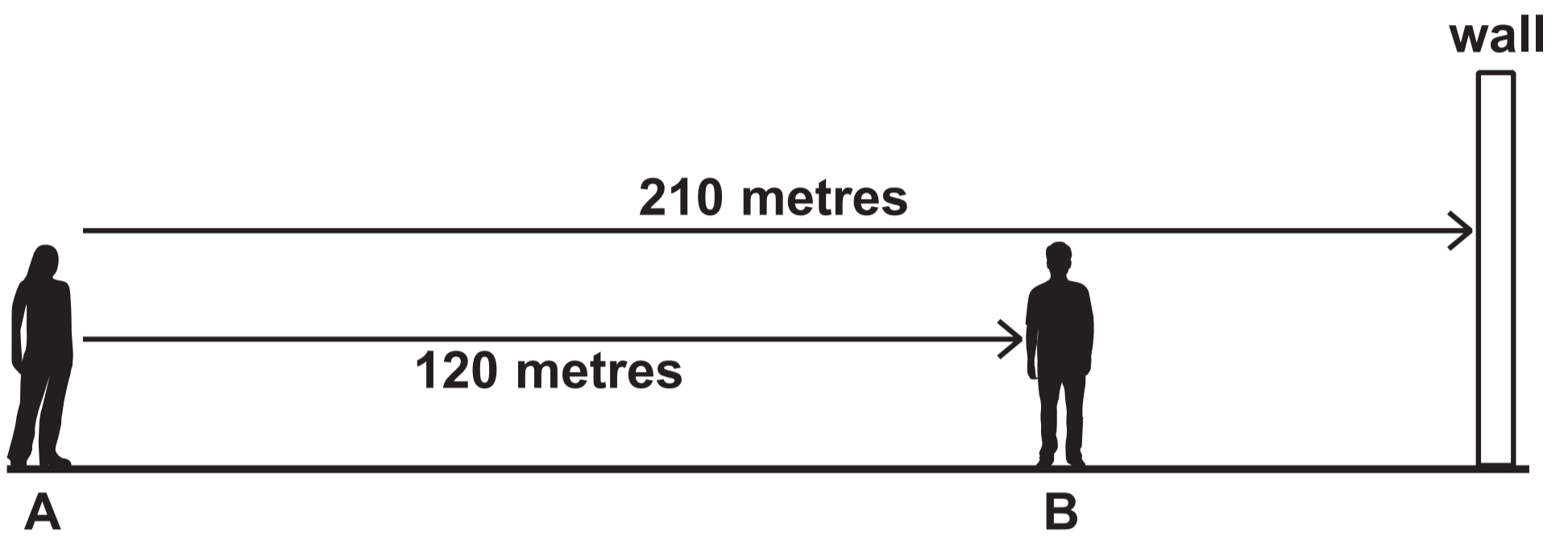
**Absolute  
magnitude**



**Temperature**

## Question 2

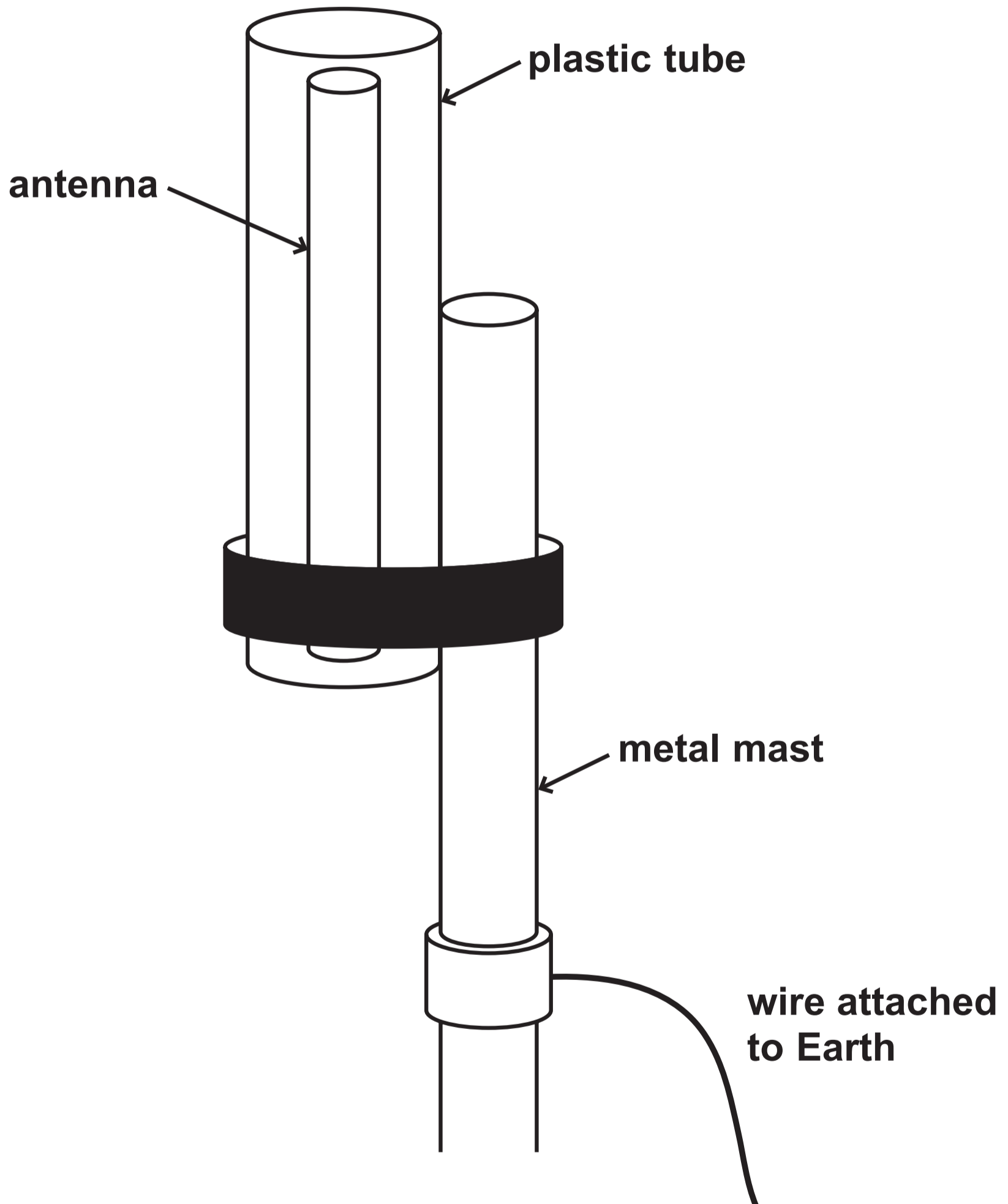
Not to scale



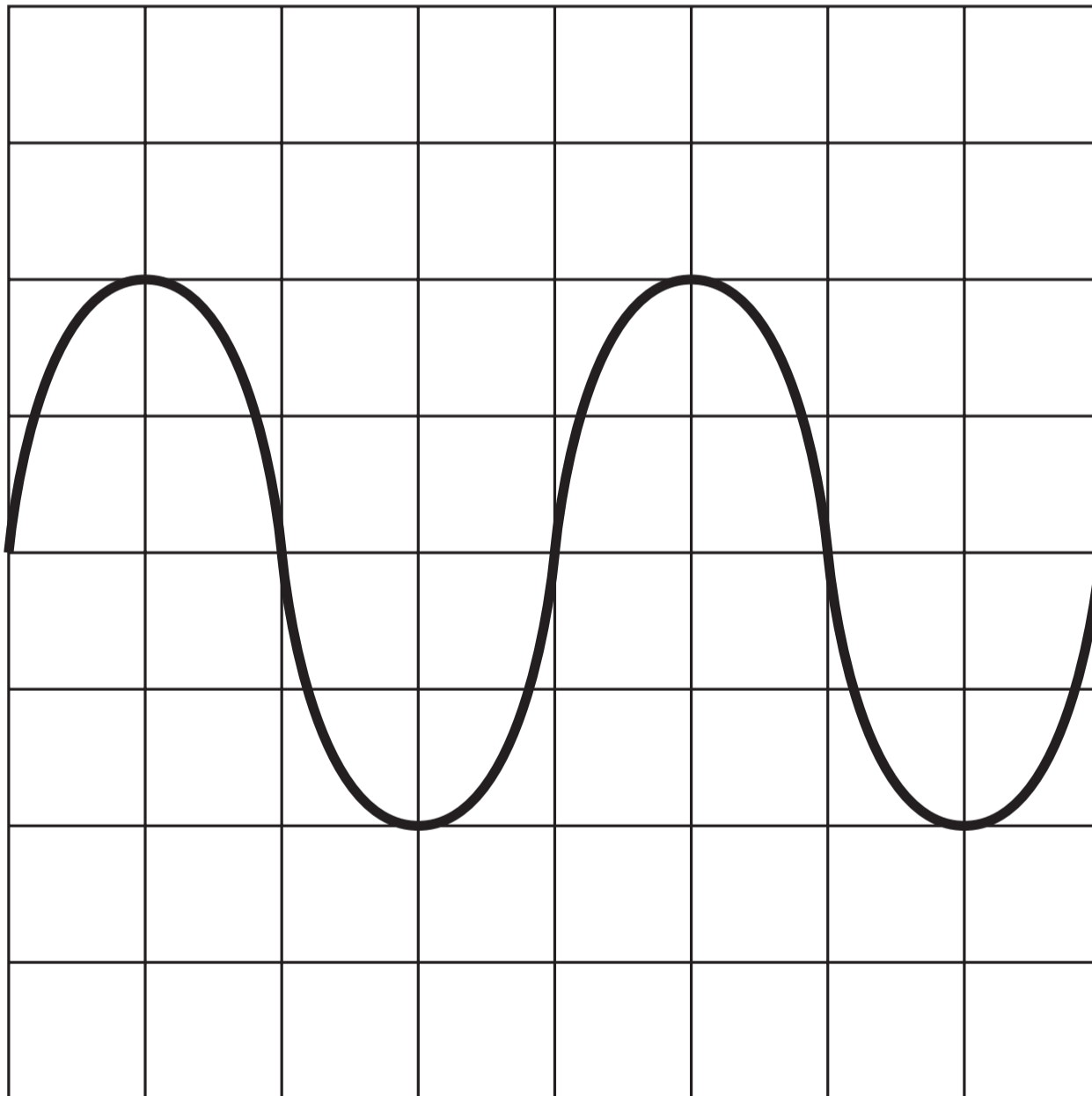
**Question 2(b)**

<b>Time in s</b>				
<b>0.50</b>	<b>0.62</b>	<b>0.52</b>	<b>0.58</b>	<b>0.55</b>

Question 3

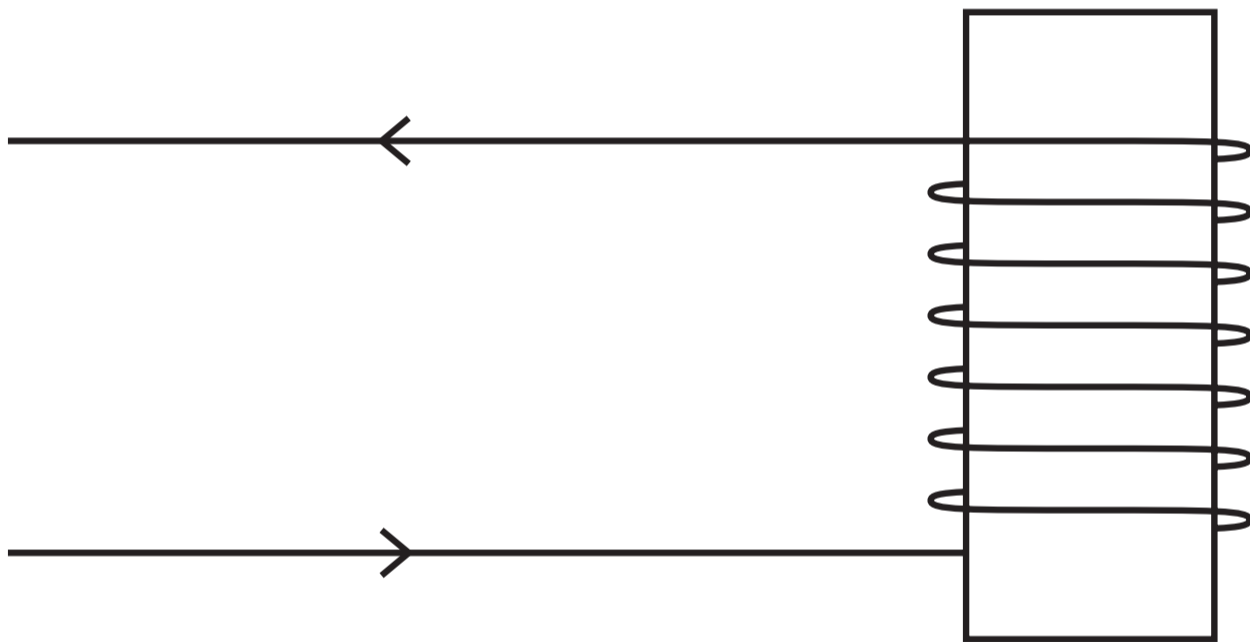




**Question 4(a)(ii)****Oscilloscope settings****y direction: 1 square = 5 V****x direction: 1 square = 0.01 ms**

## Question 4(b)(i)

DIAGRAM 1



## Question 4(b)(i) (Spare copy)

DIAGRAM 1

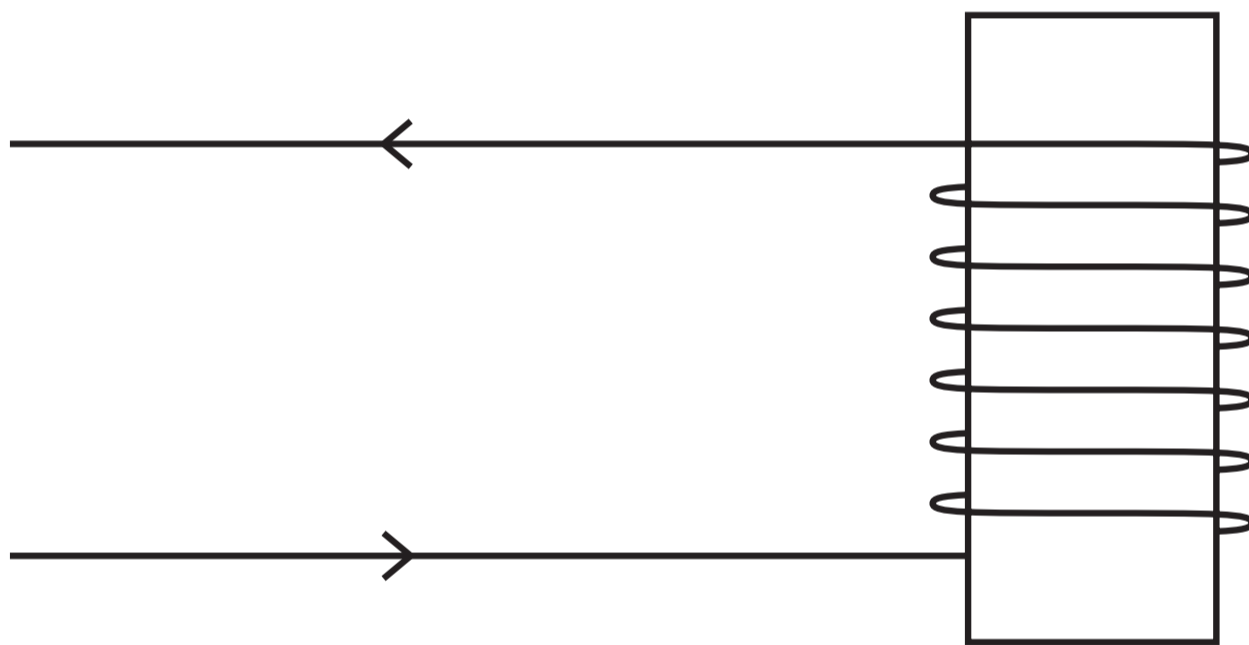
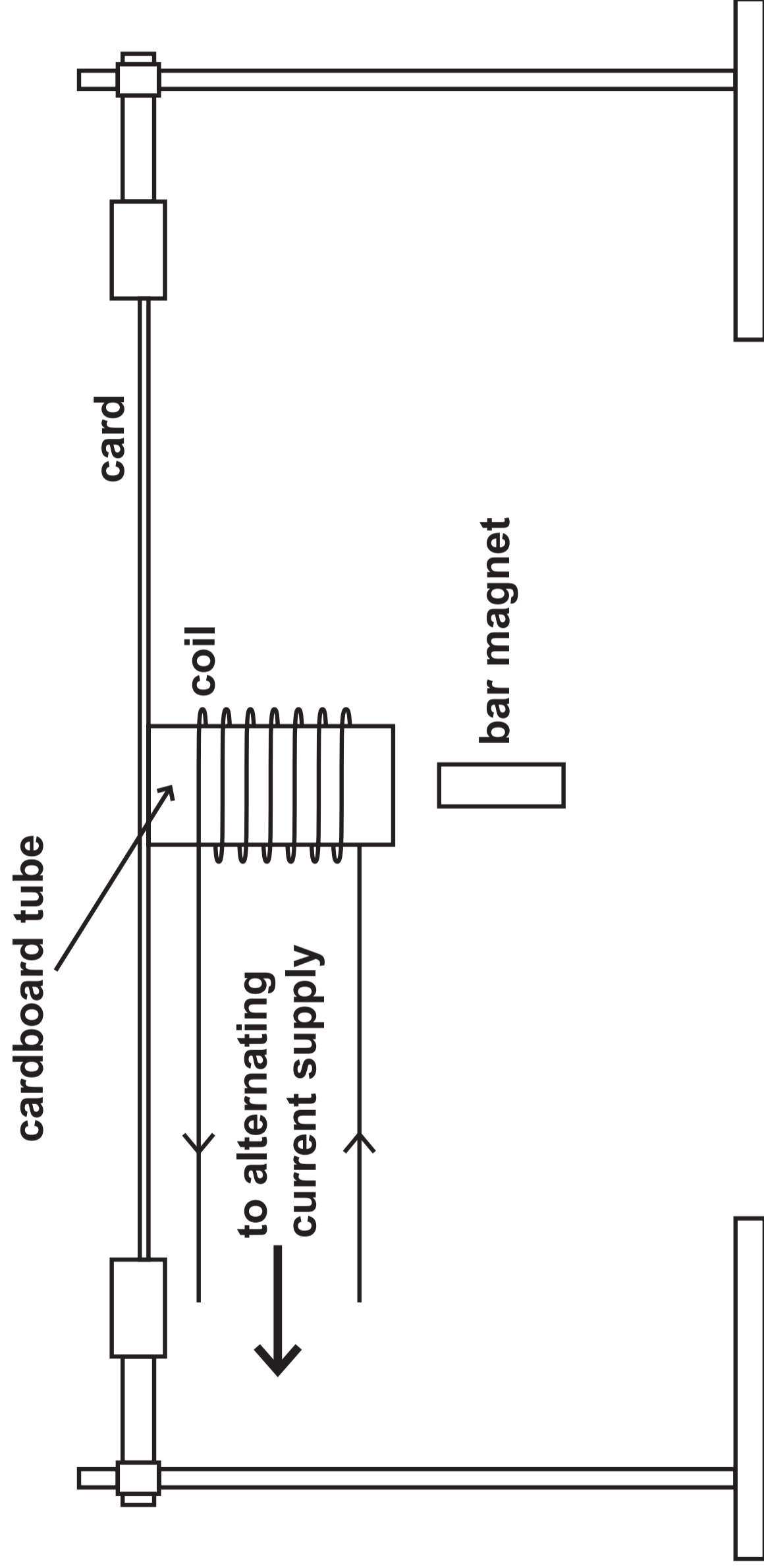
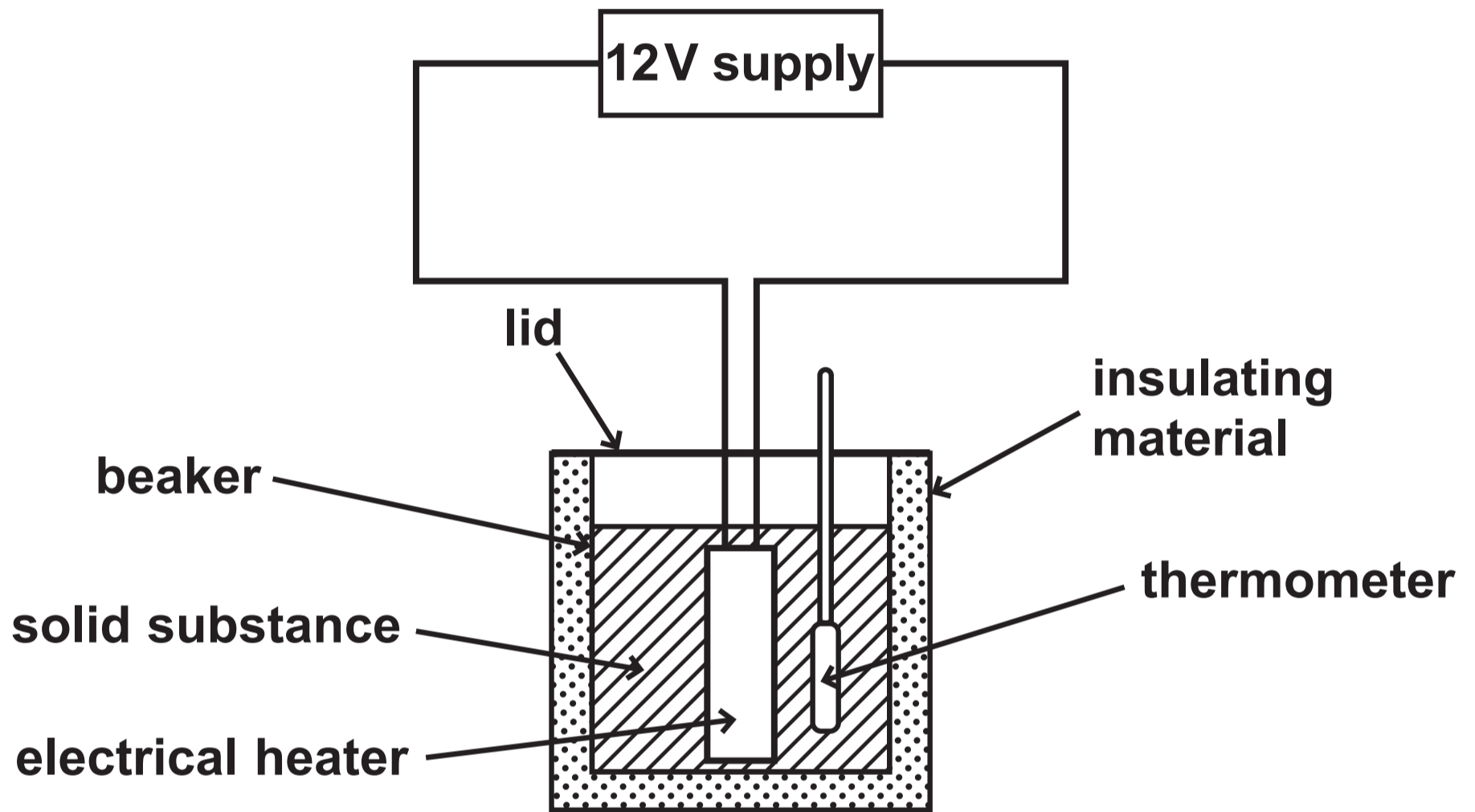


DIAGRAM 2

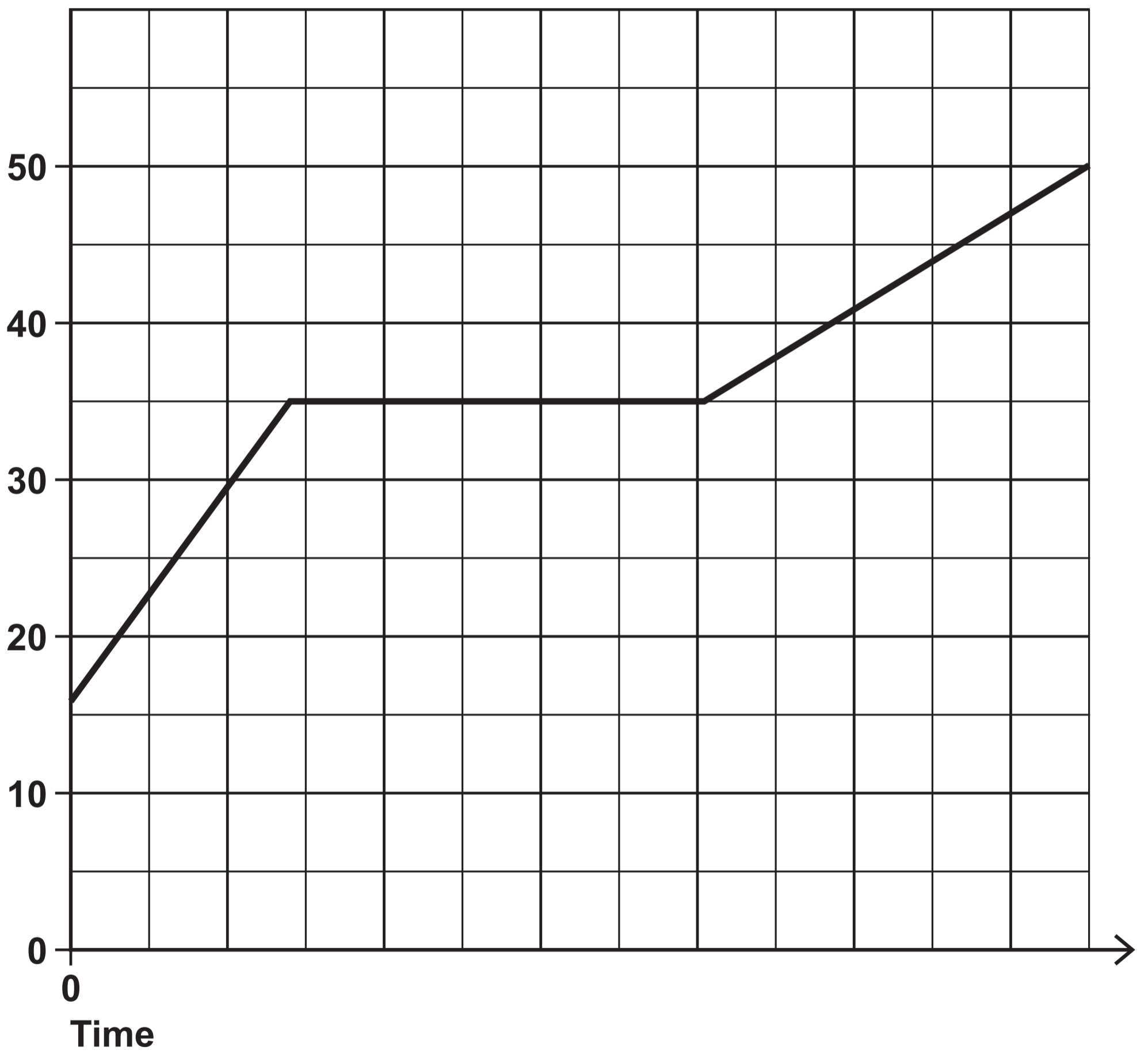


## Question 5

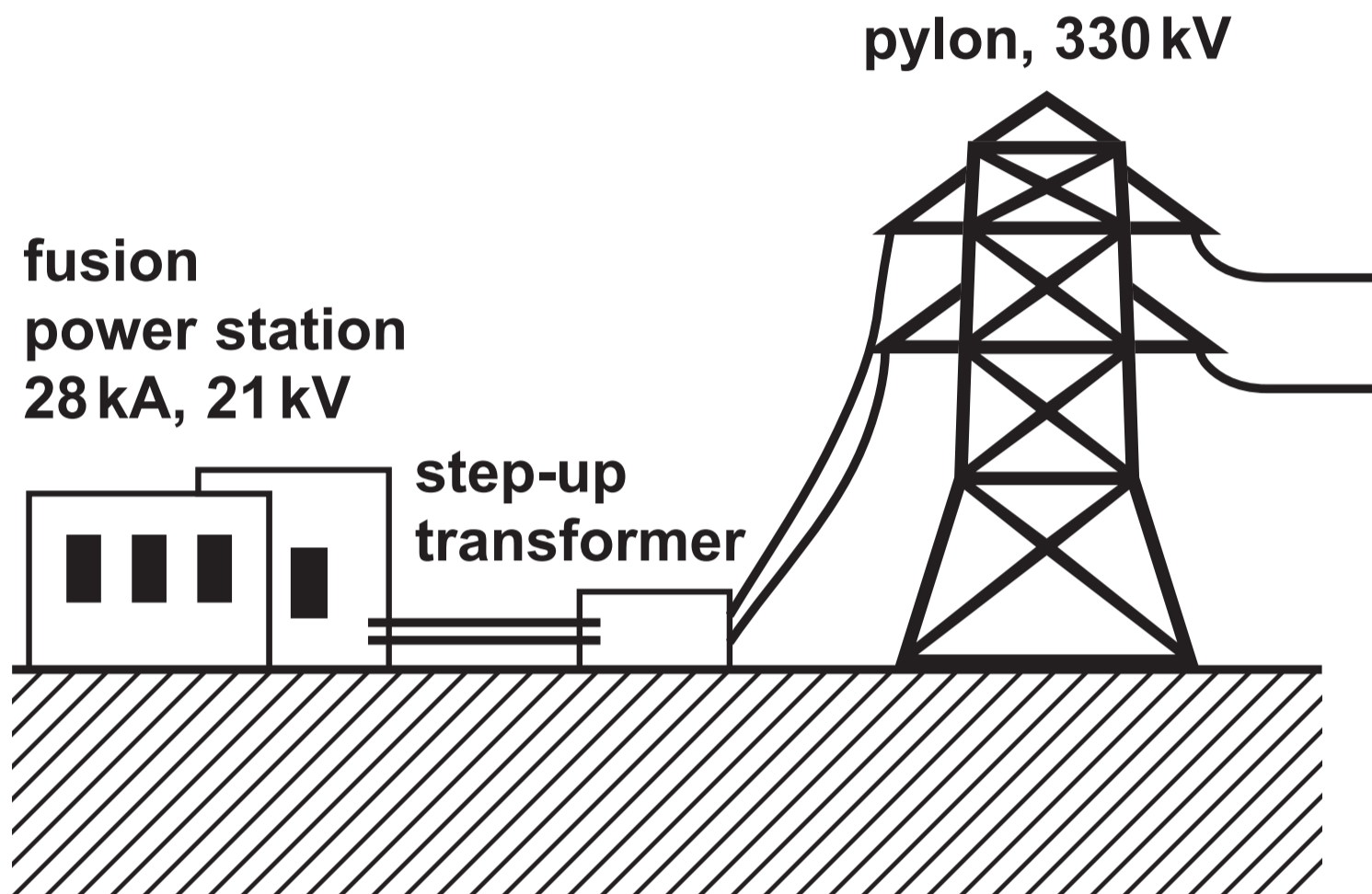


## Question 5(b)

Temperature  
in  $^{\circ}\text{C}$



## Question 6(b)



Question 7

